

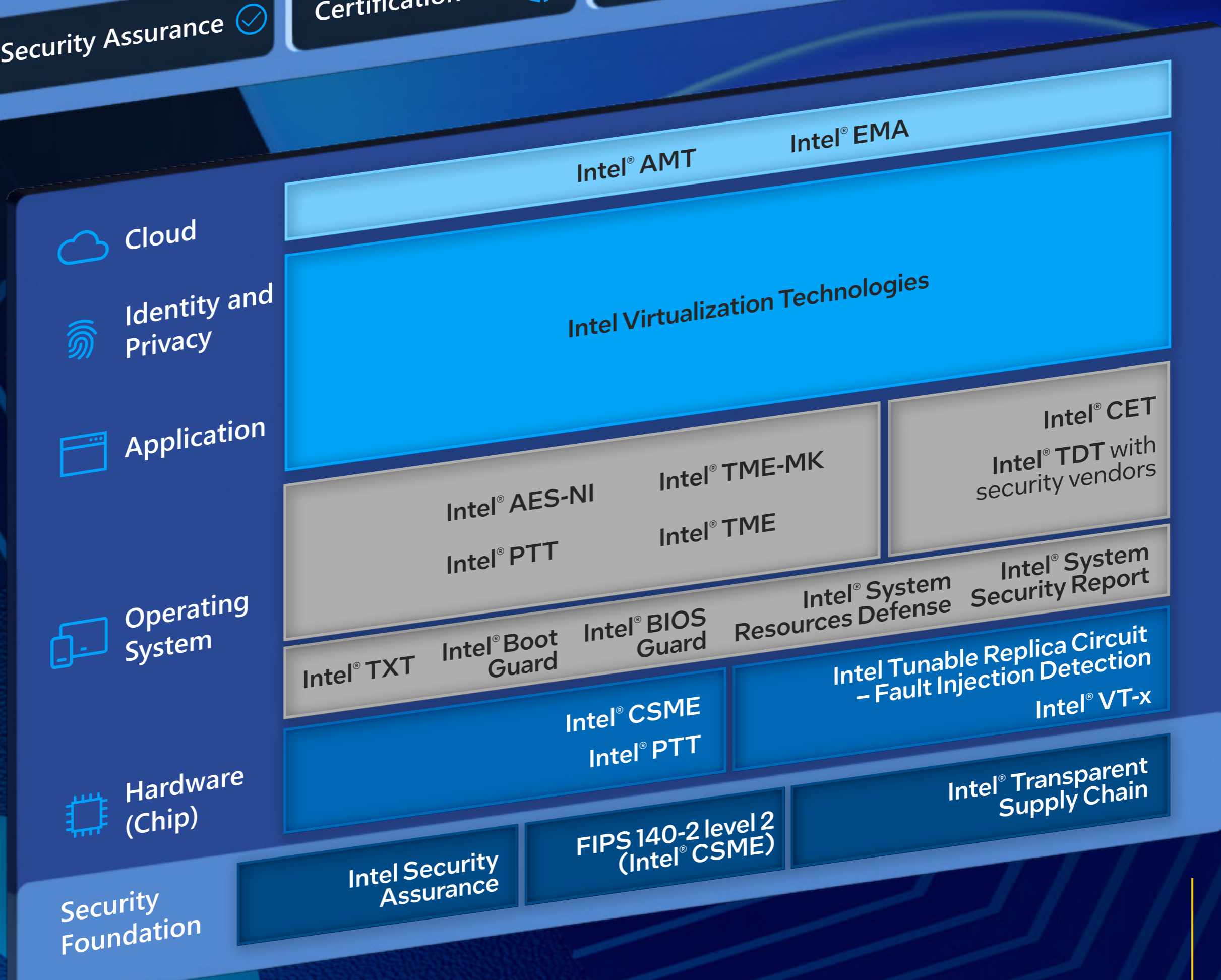
Endpoint Security Starts with Intel

The benchmark for business client security

A long-standing co-engineering commitment drives Windows 11 performance, manageability and security capabilities, enabled by layers of Intel hardware protections, from chip to cloud.



Microsoft Windows 11 security from chip to cloud¹



Intel hardware helps enable Windows 11 security

Hardware and software work better together



Cloud

Intel's remote out-of-band services include PC management and recovery no matter where your employees are working - even when the OS is down.



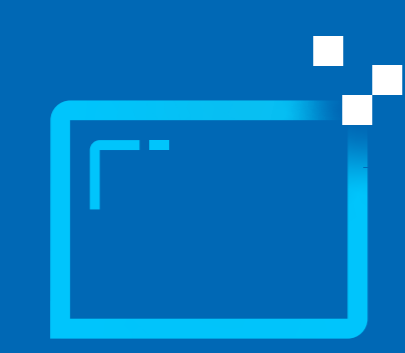
Identity & Privacy

Intel virtualization technologies support Windows Hello authentication to enhance security and enable the adoption of biometrics.



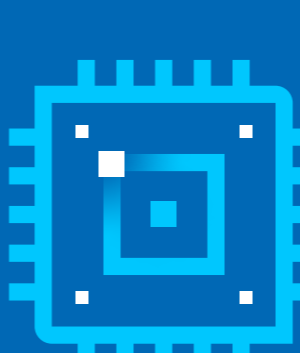
Application

Intel hardware-based isolation helps protect sensitive data and business-critical applications in virtual machines.



Operating System

Windows 11 uses multiple layers of Intel hardware-based capabilities for more secure and trusted boot as well as to help enable detection of advanced threats like ransomware, cryptojacking and software supply-chain attacks.



Hardware

Intel security hardware helps safeguard the Windows authentication stack, single sign-on tokens, and BitLocker volume encryption keys while detecting and helping mitigate security processor fault-injection attacks.



Security Foundation

Intel Security Assurance programs guide the application of security practices across hardware, firmware and software.

Windows 11 security protections are part of a comprehensive strategy based on hardware layers of security, from chip to cloud.

intel.com/vPro

¹Windows 11 Security Book

Intel technologies may require enabled hardware, software or service activation. No product or component can be absolutely secure. Your costs and results may vary.
© Intel Corporation. Intel, the Intel logo, Intel vPro and other Intel marks are trademarks of Intel Corporation or its subsidiaries. Other names and brands may be claimed as the property of others.